



Friends of Brook Green

The final Brook Green Pavilion proposal

25 June 2014

DE
ROSEE
SA

If you want a new
Brook Green Pavilion
please cast your
vote on 7th July

We are holding a meeting on 7th July from 7-8:30pm.
Please come and join the debate or just drop in to vote –
it will take a minute of your time. We need your support
and your vote if this fantastic community facility
is to be built!

Masbro
Centre
Masbro Road
W14 0LR

Email comments to
hello@friendsofbrookgreen.org

The old Brook
Green hut



The final
Brook Green
pavilion

After the community's feedback we have revised the design of the pavilion

- Reduction of stone area to the rear façade and softening it by increasing the amount of planting and timber.
- Creation of a more expressed distinction between the roof and external walls of the building by changing the material and tone of the roof and creating a greater shadow gap between roof and walls.
- Incorporating a notice board and signage into the side elevation, where we believe there will be the greatest foot traffic.



image by forbesmassie.com



image by forbesmassie.com

The New Pavilion Functions

- Two disabled new vandal proof toilets
- Tennis court reception/shop
- Small kiosk
- Storage
- Concealed bins

The New Pavilion Purpose

- Hub for the community
- Valuable and much needed facilities
- Added security to the Green
- Source of funding for future improvements to the Green



Tennis courts

Wildflower area

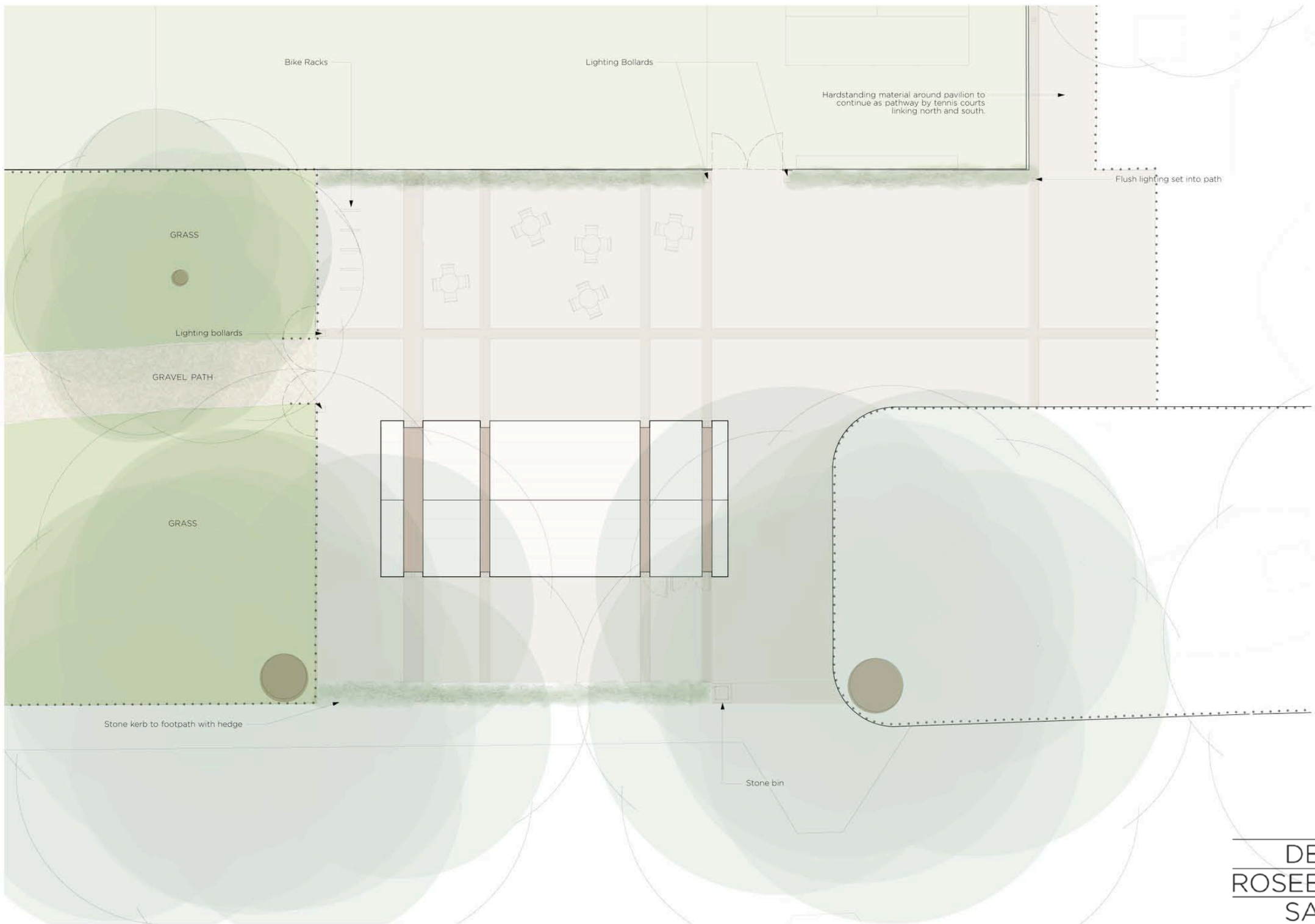
Path

Kiosk Seating

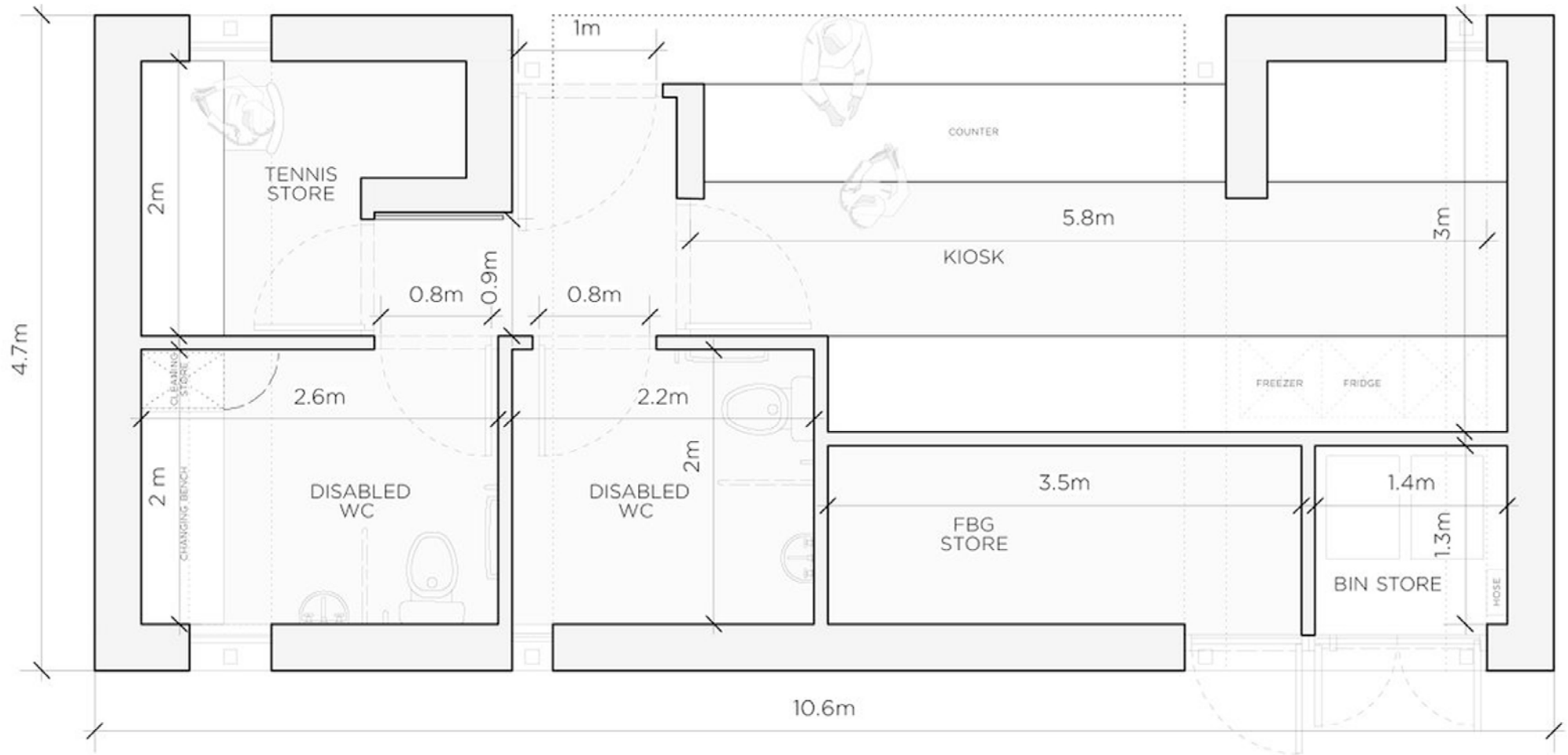
Pavilion

Playground

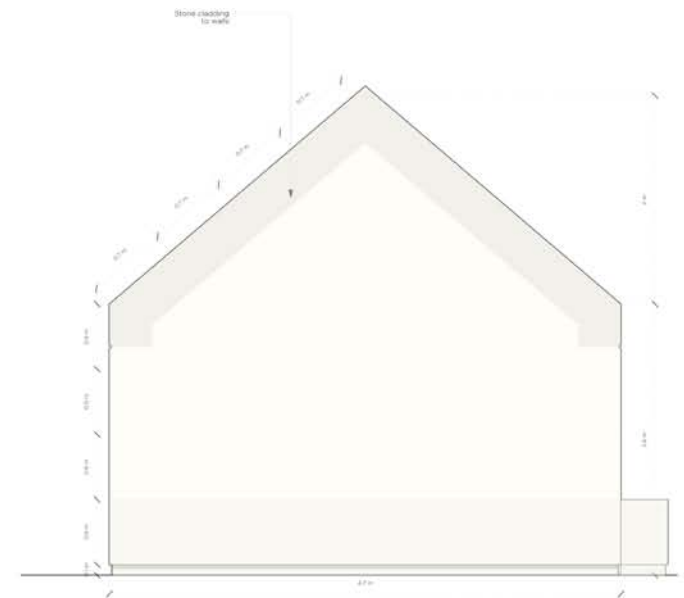
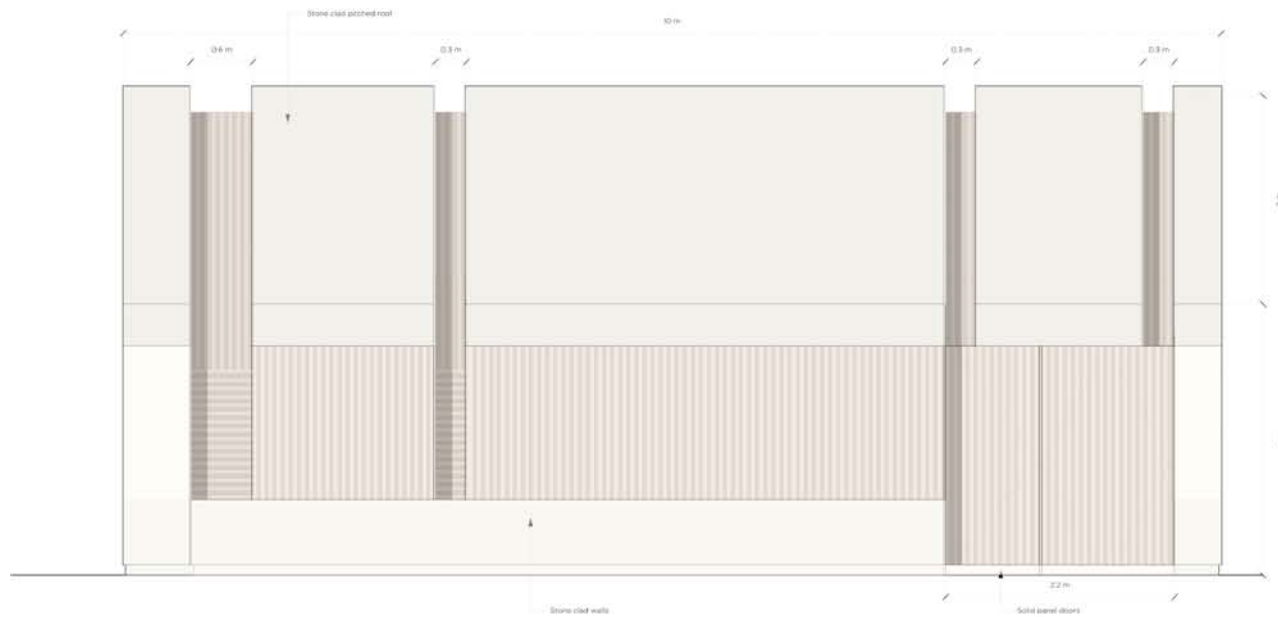
Queens Mansions



Floor plan



View from the road



Portland Stone - Grove Whitbed



Portland Stone - Fancy Beach Whitbed

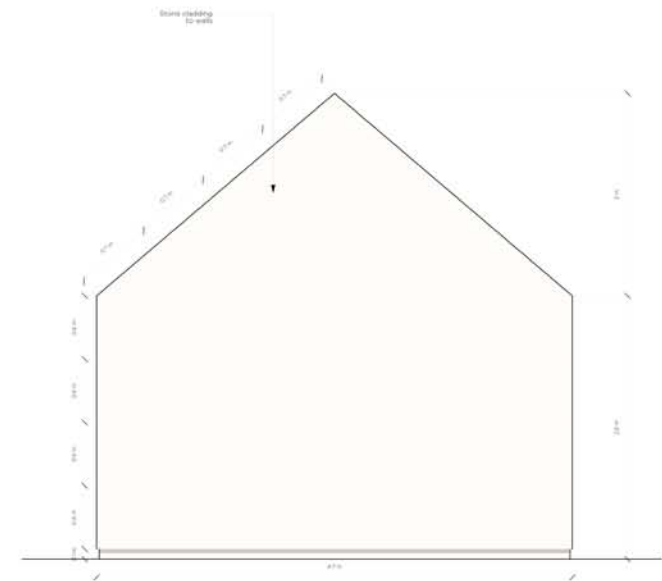


Jura Limestone



Chiswick House Cafe, W4

This architectural section drawing illustrates the facade of a building, focusing on the integration of stone and timber cladding. The drawing shows a cross-section of the building, with the exterior wall on the left and the interior space on the right. The exterior wall is composed of several vertical elements: a stone-clad wall on the far left, a central timber-clad panel with a stone counter above it, and a timber-clad door on the far right. The stone-clad wall is shown in a light beige color, while the timber-clad panels are in a light brown color. The stone counter above the timber panel is shown in a grey color. The drawing includes various annotations and dimensions: a dimension of 2.9 m is shown for the central timber panel; a dimension of 1.2 m is shown for the stone-clad wall; and a dimension of 1.2 m is shown for the timber-clad door. The drawing also includes a section line (A-A) and a section cut symbol (a triangle with a dot). The drawing is a technical illustration, showing the building's structure and materials in a clear and precise manner.



A close-up photograph of a stone wall featuring ancient Egyptian hieroglyphs. The hieroglyphs are carved into the stone and include various symbols such as birds, lotus flowers, and human figures. Below the hieroglyphs is a decorative frieze with a repeating pattern of lotus flowers. The wall is made of light-colored stone and is part of a larger structure, possibly a temple or palace.

A photograph of the Church of St. John the Evangelist in London. The image shows the church's Gothic architecture, including a tall spire and large stained-glass windows. A modern, white, rectangular extension with large glass panels is attached to the side of the church. The building is set against a clear blue sky with a few clouds. In the foreground, there is a green lawn.

A close-up photograph of a wooden door handle. The handle is made of light-colored wood and is mounted on a wall with a textured, light-colored surface. The number '14' is carved into the wood of the handle. The handle is positioned vertically, and the number '14' is oriented horizontally. The background shows a wooden door frame and a dark interior space.

DE
ROSEE
SA

BROOK GREEN PAVILION

De Rosee Sa Architects are involved in the design of the Brook Green pavilion that forms part of an ongoing programme to regenerate the Green and to provide an important public facility.

Function

The proposed design and materials aim to promote a greater aspiration for the role of the pavilion than its timber predecessor. The pavilion will house two disabled WCs, a tennis office, Friends of Brook Green store and maintenance area, but also introduce something new; a point of sale kiosk within the public space.

Location

The pavilion is located centrally to Brook Green, sitting between the tennis court entrance and the playground. The carefully considered location relates to the key routes across the green; the building is set away from the south of the tennis court fence to create a small public square where the routes across the green converge. The kiosk opens out on to the square providing a place for viewing the tennis courts or to sit and enjoy a coffee.

To the road elevation to the south, the pavilion is more private with closed timber doors to the service areas and Friends of Brook Green store and slatted timber louvres to cover the windows to the WC facilities. The area between the building and the road at the rear will be planted to 'soften' the back facade.

Material choice & precedents

The chosen material for the pavilion stems from the use of natural stone within the surrounding area. The building is to be clad in stone to the walls and roof. The outer shell will be stone, which is a tried and tested building material that can be found in numerous public buildings across London such as the newly refurbished Green Park tube station and Chiswick House Cafe.

The timber cladding extends across the kiosk door opening and runs within the internal entrance hall providing access to the tennis store and WCs.

Security and maintenance

At night the pavilion will be closed to the public and the kiosk opening covered by timber shutters to match the timber cladding to the recesses. The kiosk operator is responsible for maintenance and supervision of the two WCs that will be inaccessible when the kiosk is closed.

Consultation with the Metropolitan police has been undertaken and security measures have been recommended. Secure by design windows and doors will be specified, the building is to be alarmed and a careful choice of stone has been proposed that is hardwearing and resistant to attack and graffiti.

Lighting

Floor uplighters to the public realm will give a gentle glow to the timber recesses, with ground lighting extending along the tennis court path to create a well-lit route across the green. Lighting bollards have been proposed to the tennis court entrance and the gates leading to the western end of the green.

Landscaping

Careful consideration has been given to the planting within the public realm. Raised planters and permanent seating have been avoided to prevent anti-social behaviour and to keep the public area clear. The kiosk operator holds responsibility for putting away tables and chairs from the public realm at the end of each day and for maintaining the public space surrounding the pavilion.

Simple low level planting beds frame the edges to the public realm, along the tennis court fence and along the pavement to the south. A square stone bin to the end of the southern planter that matches the finish of the pavilion unifies the space and encourages visitors to keep the park free from litter.

Provision has been made for five bike hoops to the north of the pavilion adjacent to the tennis court fence. The location has been chosen for both its link to the courts and for the possibility of surveillance from the kiosk for added security.

The overhanging canopy of the plane trees forms a sheltered area to the public square. As part of the ongoing landscaping plan for Brook Green, a series of tree works are to be carried out. This includes for the removal of a small cherry tree to the north of the proposed location of the pavilion.

The surface of the public realm is proposed as a series of stone pavers in two tones. The darker strips of paving relating to the timber recesses of the pavilion. The surface is to be chosen as a permeable block paving to allow drainage and to aid irrigation to the surrounding trees.

Rainwater harvesting has been considered, however due to the small scale of the building the run-off will not provide enough for greywater to the WCs and hence it is proposed that water will be collected via a perimeter drain and diverted to channels to allow for irrigation of the surrounding landscape.

Disabled facilities

Both WCs provide disabled access facilities. Given the small scale of the pavilion, it is not possible to provide a fully compliant Changing Places WC. However correspondence with Parents Active, who support families of disabled children in the borough, has encouraged the inclusion of a changing bed within the family WC. This will allow Brook Green to be more socially inclusive and provide much improved facilities for the visitors to the park.

If you want a new
Brook Green Pavilion
please cast your
vote on 7th July

We are holding a meeting on 7th July from 7-8:30pm.
Please come and join the debate or just drop in to vote –
it will take a minute of your time. We need your support
and your vote if this fantastic community facility
is to be built!

Masbro
Centre
Masbro Road
W14 0LR

Email comments to
hello@friendsofbrookgreen.org